

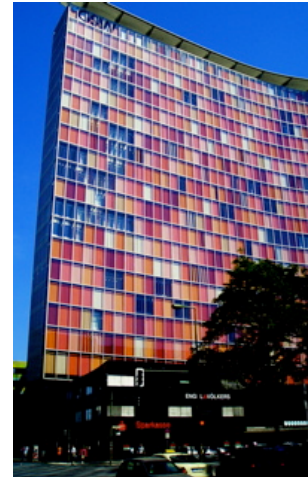
ilink Kommunikationssysteme GmbH

Charlottenstrasse 4, 10969 Berlin

Tel. +49 (30) 285 26-0

Our office is located near *Checkpoint Charlie*, at the border of Berlin Mitte and Berlin Kreuzberg. We are on the 10th floor of the GSW highrise building at the corner of *Charlottenstrasse* and *Rudi-Dutschke-Strasse* (formerly *Kochstrasse*).

The building has two entries: One at *Charlottenstrasse 4*, the other at *Rudi-Dutschke-Strasse 17* (formerly *Kochstrasse 22*). The staff in the lobby will show you the way to our office.



By plane

From Berlin-Tegel (TXL)

Either by taxi (approx. 25 minutes),

or by public transportation: take bus #128 to *Kurt-Schumacher-Platz*. Transfer to the subway (U6), take a southbound U6 train to *Alt-Mariendorf*. Get off the train at the 13th stop (*Kochstrasse*). Use the station exit near the back of your train. At the corner, make a right at *Rudi-Dutschke-Strasse*. After a 2-minute walk, you'll arrive at our building. (Total travel time: approx. 35 minutes from *Tegel*).

From Berlin-Tempelhof (THF)

Either by taxi (approx. 15 minutes),

or by subway: take a northbound U6 train at *Platz der Luftbrücke*, to *Alt-Tegel*. Get off the train at the third stop (*Kochstrasse*). Use the station exit near the front of your train. At the corner, make a right at *Rudi-Dutschke-Strasse*. After a 2-minute walk, you'll arrive at our building. (Total travel time: approx. 20 minutes from *Tempelhof*).

From Berlin-Schönefeld (SXF)

Either by taxi (approx. 30 minutes),

or by public transportation: Take the Regionalexpress train or the S-Bahn to *Friedrichstrasse*. Transfer to the subway (U6). Take a southbound U6 train to *Alt-Mariendorf*. Get off the train at the third stop (*Kochstrasse*). Use the station exit near the back of your train. At the corner, make a right at *Rudi-Dutschke-Strasse*. After a 2-minute walk, you'll arrive at our building. (Total travel time: approx. 45 minutes from *Schönefeld*).

By train

Exit the train at *Berlin Hauptbahnhof*. Transfer to an eastbound S-Bahn (S3, S5, S7, S75, S9) to *Friedrichstrasse*. Inside *Friedrichstrasse* station, transfer to the subway (U6). Take a southbound U6 train to *Alt-Mariendorf*. Get off the train at the third stop (*Kochstrasse*). Use the station exit near the back of your train. At the corner, make a right at *Rudi-Dutschke-Strasse*. After a 2-minute walk, you'll arrive at our building. (Total travel time: approx. 15 minutes from *Hauptbahnhof*).

By public transportation

The *Kochstrasse* subway station (U6) is closest to our office. It's a 2-minute walk away. An M29 bus stop is located right outside our building.

Alternative subway and S-Bahn stations:

- *Stadtmitte* (subway U2, U6) – 10-minute walk
- *Anhalter Bahnhof* (S-Bahn S1, S2, S25) – 10-minute walk (or continue on eastbound M29 bus)
- *Potsdamer Platz* (subway U2, S-Bahn S1, S2, S25, Regionalbahn) – 15-minute walk

By car

There is a public parking garage in the basement of our building. The entrance is located on the back side of the building, best approached from *Charlottenstrasse*.

Note for users of navigation systems: Due to a recent street renaming, not all navigation systems are aware of our address yet. What's more, there are eight different streets named *Charlottenstrasse* in the various parts of Berlin. If you can't find *Charlottenstrasse 4* in Berlin Mitte or Berlin Kreuzberg, please look for *Kochstrasse 22*.